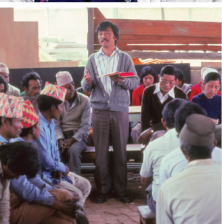


PRAY · GO · SERVE



Who is
your global
worker?



Pray that we spread the Lord's word
rapidly and that it will be honored.

Second Thessalonians 3:1



WORLD
MISSION
PRAYER
LEAGUE

This week, choose a global worker or worker family as a focus for your prayers. Pray for their personal life, ministry, and relationships with others.

Day 1: RELATIONSHIP WITH GOD

Pray that your global worker would feed on God's Word, have a healthy prayer life, be filled with the Holy Spirit, mature and grow in grace, and have victory over Satan and the flesh.

Day 2: PHYSICAL & EMOTIONAL LIFE

Pray that your global worker would adapt to the climate, be healthy in the midst of disease, find safety in danger, and have victory over loneliness, depression, and discouragement.

Day 3: FAMILY

Pray for your worker's relationships with those closest to him or her whether married, with children, or single.

Day 4: ABILITY TO COMMUNICATE

Pray that your global worker would continue to improve in study and practice of the language(s), and in cultural adaptation and understanding.

Day 5: MINISTRY

Pray that your global worker would be sensitive to the Lord's leading in teaching/preaching and witnessing. Pray for their work whether theological, translation, medical, Business-As-Mission, administrative, ESL, etc. Pray for them as they communicate with their network of supporters back home. Pray for boldness, prepared hearts, and fruitfulness!

Day 6: RELATIONSHIPS WITH OTHERS

Pray for trusting, Christ-honoring relationships between your global worker and: other global workers, national pastors, staff, church leaders, house-helpers, etc.

Day 7: COUNTRY OF MINISTRY

Pray for good governance through national and local leaders. Pray for visas and open doors. Pray that the gospel will spread throughout all cities and villages.

To receive updates and prayer requests from a WMPL worker, please visit us on the web or contact us at wmpl@wmpl.org or 612.871.6843.



WORLD
MISSION
PRAYER
LEAGUE

wmpl.org